



ZED EVG - Electronic Ballasts 24V DC for Standard and High Output Germicidal Lamps Lamp-Ballast Combinations

Instant, Rapid and Preheat Start Ballasts

lamp type	lamp operation	ballast model	ballast form	page no.
GPH287T5L, GPH303T5L, GPH436T5L, TUV16	instant and rapid start	EVG11-20W/425mA -4	B	48
G36T5L	preheat start	S-EVG30-50W/425mA -PH -4	D-24	49
TUV36PLL	preheat start	S-EVG36W/440mA -PH -4	D-24	49
TUV60PLL HO	preheat start	S-EVG60W/670mA -PH -4	D-24	49
GHO36PLL	preheat start	S-EVG80W/800mA -PH -4	D-24	49

Ballasts for other lamp types are available on request.



B



D-24

ZED EVG - Electronic Ballasts 24V DC for Standard and High Output Germicidal Lamps Instant & Rapid Start

small but powerful:
quick lamp start - space saving



ballast form B

Features

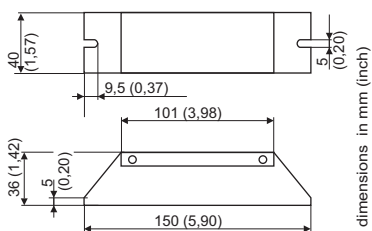
- ⇒ electronic ballast for one-lamp operation
- ⇒ to be used with two-wire and four-wire lamps
- ⇒ instant and rapid start
for applications with less than one switch-on cycle per day
(otherwise preheat start ballasts are recommended)
- ⇒ lamp status indication via LED indicators
 - green LED: lamp on
 - red LED: lamp fault
- ⇒ lamp status forwarding
 - photocoupler for lamp on / lamp fault

ballast name	input power [W]	input current [A]	power per lamp [W]	lamp current [A]	lamp type
EVG11-20W/425mA -4	up to 24	0,47 - 1,1	11-20	0,425 ± 10%	GPH287T5L, GPH303T5L, GPH436T5L, TUV16

Lamp filament must be suitable for instant start operation, ask lamp manufacturer.
If four-wire lamps are used, lamp filaments have to be shorted (see wiring diagrams).

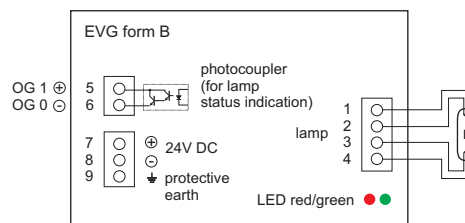
mains voltage:	24V DC ± 5% (power supply requirements: stabilised, short-circuit proof, inrush current, see additional instructions at 'Ballast Generals')
mains frequency:	45...65Hz
efficiency:	approx. 80%
t_c-temperature:	max. 50°C
ambient temperature:	0...40°C
status indication:	operating status indicated - by LED: green = lamp on red = lamp fault - by photocoupler (refer to 'Ballast Generals' for more information on lamp status indication via photocoupler)
connection specifics:	terminals 1...4, max. off-load voltage: 750V _{rms} photocoupler, max. current on OG: 5mA (open collector V _{OG1/0} <1V ⇒ V _{CESAT} <1V) max. cable length between ballast and lamp: 0,5m
IP code:	IP20
mounting restrictions:	upright, mains connector at bottom side, see 'Ballast Generals' for details
wire gauge:	0,5...1mm ² ; strip length: 8mm

Dimensions

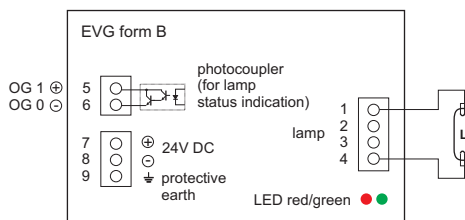


Wiring diagrams

wiring of four-wire lamps



wiring of two-wire lamps





ZED EVG - Electronic Ballasts 24V DC for Standard and High Output Germicidal Lamps Preheat Start

smart, small & powerful:

soft lamp start - space saving



ballast form D-24

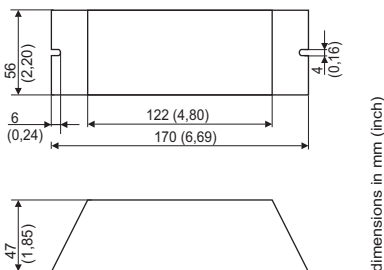
Features

- ⇒ electronic ballast for one-lamp operation
- ⇒ to be used with four-wire lamps
- ⇒ preheat start
for applications with more than one switch-on cycle per day
- ⇒ lamp status indication via LED indicators
 - green LED: lamp on
 - red LED: lamp fault
- ⇒ lamp status forwarding
 - potential free relay contacts for lamp on / lamp fault

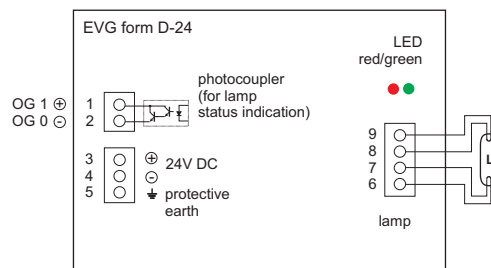
ballast name	input power [W]	input current [A]	power per lamp [W]	lamp current [A]	lamp type
S-EVG30-50W/425mA -PH -4	42	1,8	36	0,42 - 0,44	G36T5L
S-EVG36W/440mA -PH -4	42	1,8	36	0,42 - 0,44	TUV36PLL
S-EVG60W/670mA -PH -4	67	2,8	60	0,66 - 0,68	TUV60PLL HO
S-EVG80W/800mA -PH -4	80	3,7	80	0,8	GHO36T5L

mains voltage:	24V DC \pm 5% (power supply requirements: stabilised, short-circuit proof, inrush current, see additional instructions at 'Ballast Generals')
mains frequency:	45...65Hz
efficiency:	S-EVG30-50W: >85% S-EVG60W/80W: >90%
t_c-temperature:	max. 50°C
ambient temperature:	0...40°C
status indication:	operating status indicated - by LED: green = lamp on red = lamp fault - by photocoupler (refer to 'Ballast Generals' for more information on lamp status indication via photocoupler)
connection specifics:	terminals 6...9, max. off-load voltage: 55V _{rms} photocoupler, max. current on OG: 5mA (open collector V _{OG1/0} < 1V \Rightarrow V _{CESAT} < 1V) max. cable length between ballast and lamp: 0,5m
IP code:	IP20
mounting restrictions:	upright, mains connector at bottom side, see 'Ballast Generals' for details
wire gauge:	0,5...1mm ² ; strip length: 8mm

Dimensions



Wiring diagram





Notices