



ZED-EVG - Electronic Ballasts 230V AC for Amalgam Lamps Lamp-Ballast Combinations

Rapid, Preheat and Preheat Start+ Ballasts

lamp type	lamp operation	lamps per ballast	ballast model	ballast form	page no.
GIA120, UNI 120	rapid start	1	EVG100-150W/1,5A	E	22
	rapid start	2	EVG2x[100-150W]/1,5A	G	23
NNI 60/35XL	rapid start	1	EVG65-80W/1,5A	E	22
	rapid start	2	EVG2x[65-80W]/1,5A	G	23
	preheat start	1	EVG65-80W/1,5A -PH	E-PH	25
	preheat start	2	EVG2x[65-80W]/1,5A -PH	G-PH	26
NNI 80/36U, NNI 120/86, NNI 125/86	rapid start	1	EVG100-150W/1,5A	E	22
	rapid start	2	EVG2x[100-150W]/1,5A	G	23
	preheat start	1	EVG100-150W/1,5A -PH	E-PH	25
	preheat start	2	EVG2x[100-150W]/1,5A -PH	G-PH	26
GIA200, UNI 201	rapid start	1	EVG150-200W/1,5A	E	22
	rapid start	2	EVG2x[150-200W]/1,5A	G	23
NNI 200/107	rapid start	1	EVG160-200W/2A	E	22
	rapid start	2	EVG2x[160-200W]/2A	G	23
	preheat start	1	EVG160-200W/2A -PH	E-PH	25
	preheat start	1	EVG2x[160-200W]/2A -PH	G-PH	26
NNI 201/107XL	rapid start	1	EVG160-200W/2A	E	22
	preheat start	1	EVG160-200W/2A -PH	E-PH	25
	preheat start+	2	EVG2x[220W]/2A -PH	I-PH	28
	preheat start+	2	R-EVG2x[220W]/2A -PH	T	29
	preheat start+	2	R-EVG2x[220W]/2A -PH	U	30
NNI 300/147XL	rapid start	1	EVG300W/2,1A	H	24
	preheat start	1	EVG300W/2,1A -PH	H-PH	27
	preheat start+	2	EVG2x[300W]/2,1A -PH	I-PH	28
	preheat start+	1	R-EVG300W/2,1A -PH	T	29
	preheat start+	2	R-EVG2x[300W]/2,1A -PH	U	30
NNI 400/147XL	rapid start	1	EVG400W/3,8A	H	24
	preheat start	1	EVG400W/3,8A -PH	H-PH	27
	preheat start+	1	R-EVG400W/3,8A -PH	T	29
TUV130XPT	rapid start	1	EVG130W/2,1A	E	22
	rapid start	2	EVG2x[130W]/2,1A	G	23
TUV330XPT	rapid start	1	EVG330W/4,8A	H	24
	preheat start	1	EVG330W/4,8A -PH	H-PH	27
	preheat start+	1	R-EVG330W/4,8A -PH	T	29
UNI 200	rapid start	1	EVG160-200W/2A	E	22
	rapid start	2	EVG2x[160-200W]/2A	G	23
GIA240	rapid start	1	EVG240W/2A	H	24
NNI 600	preheat start+	1	EVG600W/5A -PH	W	32
	preheat start+	2	R-EVG600W/5A -PH	V	31

'preheat start+' types allow the optimal adaptation of lamp and ballast.
Ballasts for other lamp types are available on request.



E



E-PH



G



G-PH



H



H-PH



I-PH



T



U



V



W



ZED-EVG - Electronic Ballasts 230V AC for Amalgam Lamps Rapid Start

established and proven:
quick lamp start - easy handling



ballast form E

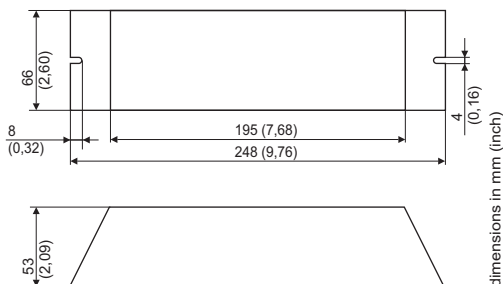
Features

- ⇨ electronic ballast for one-lamp operation
- ⇨ to be used with four-wire lamps
- ⇨ rapid start
for applications with less than one switch-on cycle per day
(otherwise preheat start ballasts are recommended)
- ⇨ equipped with active power factor correction
- ⇨ lamp status indication via LED indicators
 - green LED: lamp on
 - red LED: lamp fault
- ⇨ lamp status forwarding
 - potential free relay contacts for lamp on / lamp fault

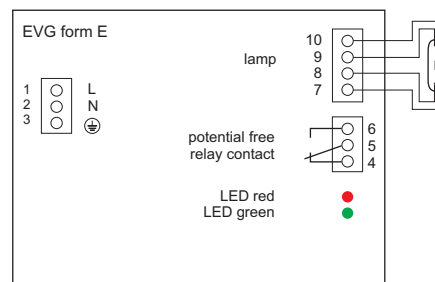
ballast name	input power [W]	input current [A]	power per lamp [W]	lamp current [A]	lamp type
EVG65-80W/1,5A	up to 85	0,35 - 0,43	65 - 80	1,5	NNI60/35XL
EVG130W/2,1A	140 - 150	0,56 - 0,75	130 - 140	2 - 2,1	TUV130XPT
EVG150-200W/1A	160 - 220	0,65 - 1,0	150 - 200	0,8 - 1	GHO64T5, TUV64T5HO
EVG100-150W/1,5A	110 - 160	0,43 - 0,77	100 - 150	1,4 - 1,5	GIA120, LTC115T12, NNI120/86, NNI80/36U, TUV115, UNI120
EVG150-200W/1,5A	160 - 220	0,65 - 1,0	150 - 200	1,4 - 1,5	GIA200, UNI201
EVG160-200W/2A	175 - 220	0,7 - 1,1	160 - 200	1,85 - 2	NNI200/107, UNI200, NNI201/107XL

mains voltage:	230V AC \pm 10%
mains frequency:	45...65Hz
efficiency:	> 90%
t_c-temperature:	max. 50°C
ambient temperature:	0...40°C
relay contacts:	potential free, load: 50...500mA at 24...230V AC; 50...500mA at 5...60V DC
status indication:	operating status indicated - by LED: green = lamp on red = lamp fault - by relay (refer to 'Ballast Generals' for more information on lamp status indication via relay)
IP code:	IP20
mounting restrictions:	upright, mains connector at bottom side, see 'Ballast Generals' for details
wire gauge:	0,75...1,5mm ² ; strip length: 10...12mm

Dimensions



Wiring diagram





ZED-EVG - Electronic Ballasts 230V AC for Amalgam Lamps Rapid Start

established and proven:
quick lamp start - easy handling



ballast form G

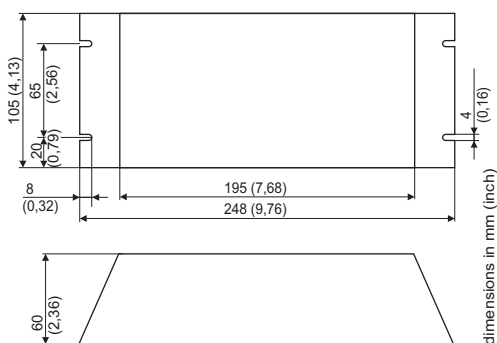
Features

- ⇒ electronic ballast for two-lamp operation
 - ballasts are operating even with only one lamp connected
- ⇒ to be used with four-wire lamps
- ⇒ rapid start for applications with less than one switch-on cycle per day (otherwise preheat start ballasts are recommended)
- ⇒ equipped with active power factor correction
- ⇒ lamp status indication via LED indicators
 - green LED: lamp on
 - red LED: lamp fault
- ⇒ lamp status forwarding
 - potential free relay contacts for lamp on / lamp fault

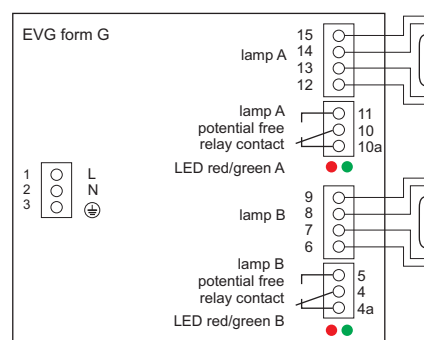
ballast name	input power [W]	input current [A]	power per lamp [W]	lamp current [A]	lamp type
EVG2x[65-80W]/1,5A	up to 175	0,7 - 0,38	65 - 80	1,5	NNI60/35XL
EVG2x[130W]/2,1A	up to 300	1,12 - 1,5	130 - 140	2 - 2,1	TUV130XPT
EVG2x[150-200W]/1A	up to 440	1,7 - 2,1	150 - 200	0,8 - 1	GHO64T5, TUV64T5HO
EVG2x[100-150W]/1,5A	up to 300	0,87 - 1,3	100 - 150	1,4 - 1,5	GIA120, LTC115T12, NNI80/36U, NNI120/86, TUV115, UNI120
EVG2x[150-200W]/1,5A	up to 440	1,7 - 2,1	150 - 200	1,4 - 1,5	GIA200, UNI201
EVG2x[160-200W]/2A	up to 440	1,7 - 2,1	160 - 200	1,85 - 2	NNI200/107, UNI200

mains voltage:	230V AC \pm 10%
mains frequency:	45...65Hz
efficiency:	> 90%
t_c-temperature:	max. 50°C
ambient temperature:	0...40°C
relay contacts:	potential free, load: 50...500mA at 24...230V AC; 50...500mA at 5...60V DC
status indication:	operating status indicated - by LED: green = lamp on red = lamp fault - by relay (refer to 'Ballast Generals' for more information on lamp status indication via relay)
IP code:	IP20
mounting restrictions:	upright, mains connector at bottom side, see 'Ballast Generals' for details
wire gauge:	0,75...1,5mm ² ; strip length: 10...12mm

Dimensions



Wiring diagram



ZED-EVG - Electronic Ballasts 230V AC for Amalgam Lamps Rapid Start

established and proven:
quick lamp start - easy handling



ballast form H

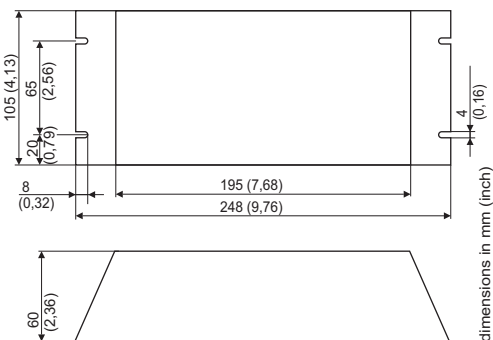
Features

- ⇨ electronic ballast for one-lamp operation
- ⇨ to be used with four-wire lamps
- ⇨ rapid start
for applications with less than one switch-on cycle per day
(otherwise preheat start ballasts are recommended)
- ⇨ equipped with active power factor correction
- ⇨ lamp status indication via LED indicators
 - green LED: lamp on
 - red LED: lamp fault
- ⇨ lamp status forwarding
 - potential free relay contacts for lamp on / lamp fault

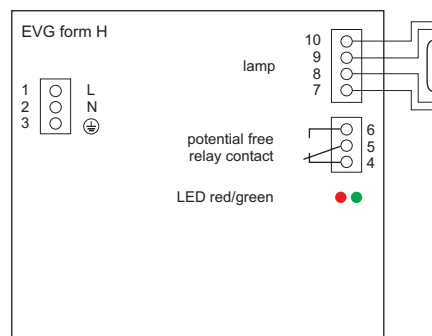
ballast name	input power [W]	input current [A]	power per lamp [W]	lamp current [A]	lamp type
EVG240W/2A	250 - 280	0,99 - 1,35	220 - 250	1,9 - 2,2	UNI260, GIA240, TUV240WXPT
EVG270W/3,8A	280 - 310	1,1 - 1,5	250 - 280	3,6 - 4,0	TUV260XPT, TUV270XPT
EVG300W/2,1A	350	1,38 - 1,7	320	2,1 - 2,4	NNI300/147XL
EVG320W/2,2A	350	1,38 - 1,7	320	2,1 - 2,4	TUV325XPT
EVG400W/3,8A	425	1,7 - 2,1	400	3,8	NNI400/147XL
EVG330W/4,8A	370	1,46 - 1,79	330	4,8	TUV330XPT

mains voltage:	230V AC ± 10%
mains frequency:	45...65Hz
efficiency:	> 90%
t_c-temperature:	max. 50°C
ambient temperature:	0...40°C
relay contacts:	potential free, load: 50...500mA at 24...230V AC; 50...500mA at 5...60V DC
status indication:	operating status indicated - by LED: green = lamp on red = lamp fault - by relay (refer to 'Ballast Generals' for more information on lamp status indication via relay)
IP code:	IP20
mounting restrictions:	upright, mains connector at bottom side, see 'Ballast Generals' for details
wire gauge:	0,75...1,5mm ² ; strip length: 10...12mm

Dimensions



Wiring diagram





ZED-EVG - Electronic Ballasts 230V AC for Amalgam Lamps Preheat Start

Filament preheating is good for lamp electrode life.

lamp friendly:
soft lamp start allows more on-/off cycles



ballast form E-PH

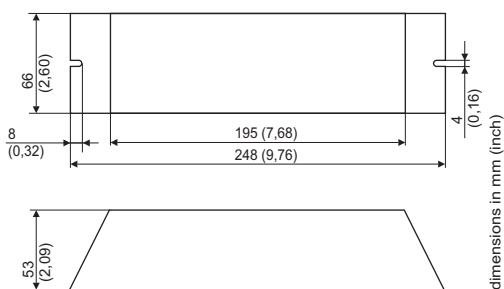
Features

- ⇒ electronic ballast for one-lamp operation
- ⇒ to be used with four-wire lamps
- ⇒ preheat start for applications with more than one switch-on cycle per day
 - preheat values are fixed
- ⇒ equipped with active power factor correction
- ⇒ lamp status indication via LED indicators
 - green LED: lamp on
 - red LED: lamp fault
- ⇒ lamp status forwarding
 - potential free relay contacts for lamp on / lamp fault

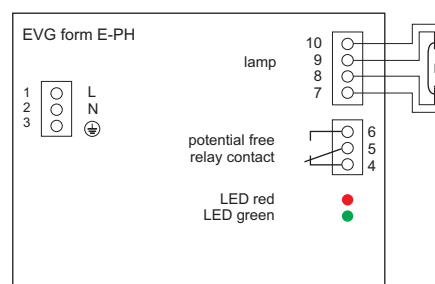
ballast name	input power [W]	input current [A]	power per lamp [W]	lamp current [A]	preheat current [A]	preheat time [s]	lamp type
EVG65-80W/1,5A -PH	up to 85	0,35 - 0,43	65 - 80	1,5	2	12	NNI60/35XL
EVG100-150W/1,5A -PH	110 - 160	0,43 - 0,77	100 - 150	1,4 - 1,5	2	12	NNI80/36U, NNI120/86, NNI125/86
EVG160-200W/2A -PH	175 - 220	0,7 - 1,1	160 - 200	1,85 - 2	2	12	NNI200/107, NNI201/107XL

mains voltage:	230V AC \pm 10%
mains frequency:	45...65Hz
efficiency:	> 90%
t_c-temperature:	max. 50°C
ambient temperature:	0...40°C
relay contacts:	potential free, load: 50...500mA at 24...230V AC; 50...500mA at 5...60V DC
status indication:	operating status indicated - by LED: green = lamp on red = lamp fault - by relay (refer to 'Ballast Generals' for more information on lamp status indication via relay)
IP code:	IP20
mounting restrictions:	upright, mains connector at bottom side, see 'Ballast Generals' for details
wire gauge:	0,75...1,5mm ² ; strip length: 10...12mm

Dimensions



Wiring diagram





ZED-EVG - Electronic Ballasts 230V AC for Amalgam Lamps Preheat Start

Filament preheating is good for lamp electrode life.

lamp friendly:
soft lamp start allows more on-/off cycles



ballast form G-PH

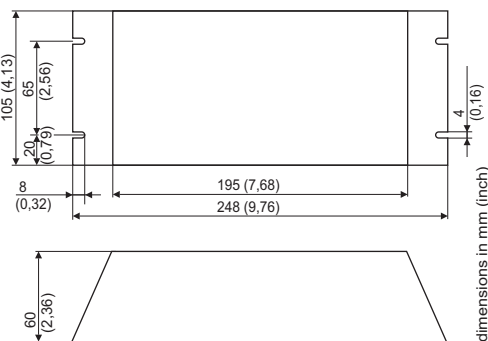
Features

- ⇒ electronic ballast for two-lamp operation
 - ballasts are operating even with only one lamp connected
- ⇒ to be used with four-wire lamps
- ⇒ preheat start for applications with more than one switch-on cycle per day
 - preheat values are fixed
- ⇒ equipped with active power factor correction
- ⇒ lamp status indication via LED indicators
 - green LED: lamp on
 - green LED blinking: preheating
 - red LED: lamp fault
- ⇒ lamp status forwarding
 - potential free relay contacts for lamp on / lamp fault

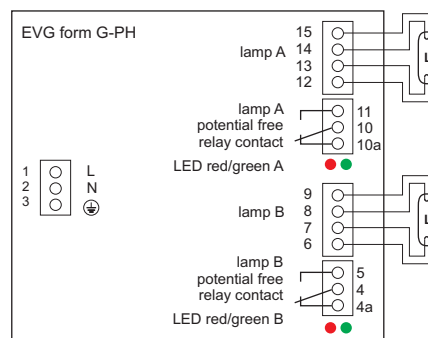
ballast name	input power [W]	input current [A]	power per lamp [W]	lamp current [A]	preheat current [A]	preheat time [s]	lamp type
EVG2x[65-80W]/1,5A -PH	up to 85	0,35 - 0,43	65 - 80	1,5	2	12	NNI60/35XL
EVG2x[100-150W]/1,5A -PH	up to 300	0,87 - 1,3	100 -150	1,4 - 1,5	2	12	NNI80/36U, NNI120/86
EVG2x[160-200W]/2A -PH	up to 440	1,7 - 2,1	160 - 200	1,85 - 2	2	12	NNI200/107

mains voltage:	230V AC ± 10%
mains frequency:	45...65Hz
efficiency:	> 90%
t_c-temperature:	max. 50°C
ambient temperature:	0...40°C
relay contacts:	potential free, load: 50...500mA at 24...230V AC; 50...500mA at 5...60V DC
status indication:	operating status indicated - by LED: green = lamp on red = lamp fault - by relay (refer to 'Ballast Generals' for more information on lamp status indication via relay)
IP code:	IP20
mounting restrictions:	upright, mains connector at bottom side, see 'Ballast Generals' for details
wire gauge:	0,75...1,5mm ² ; strip length: 10...12mm

Dimensions



Wiring diagram





ZED-EVG - Electronic Ballasts 230V AC for Amalgam Lamps Preheat Start

Filament preheating is good for lamp electrode life.

lamp friendly:
soft lamp start allows more on-/off cycles



ballast form H-PH

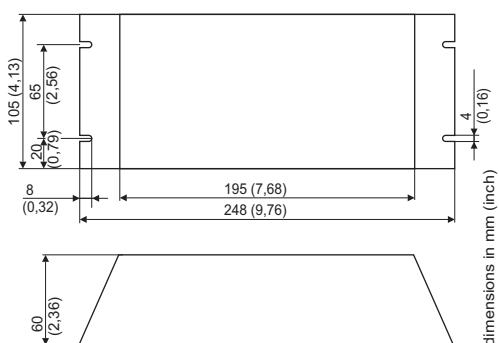
Features

- ⇒ electronic ballast for one-lamp operation
- ⇒ to be used with four-wire lamps
- ⇒ preheat start for applications with more than one switch-on cycle per day
 - preheat values are fixed
- ⇒ equipped with active power factor correction
- ⇒ lamp status indication via LED indicators
 - green LED: lamp on
 - green LED blinking: preheating
 - red LED: lamp fault
- ⇒ lamp status forwarding
 - potential free relay contacts for lamp on / lamp fault

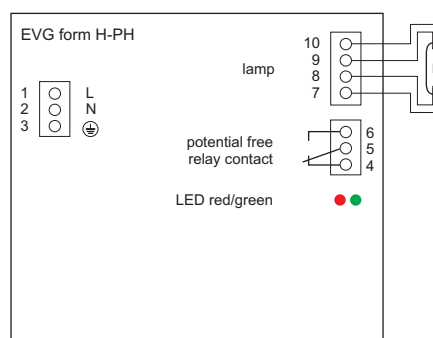
ballast name	input power [W]	input current [A]	power per lamp [W]	lamp current [A]	preheat current [A]	preheat time [s]	lamp type
EVG300W/2,1A -PH	350	1,38 - 1,7	320	2,1 - 2,4	2	12	NNI300/147XL
EVG400W/3,8A -PH	425	1,7 - 2,1	400	3,8	3,8	20	NNI400/147XL
EVG330W/4,8A -PH	370	1,46 - 1,79	330	4,8	5	20	TUV330XPT

mains voltage:	230V AC \pm 10%
mains frequency:	45...65Hz
efficiency:	> 90%
t_c-temperature:	max. 50°C
ambient temperature:	0...40°C
relay contacts:	potential free, load: 50...500mA at 24...230V AC; 50...500mA at 5...60V DC
status indication:	operating status indicated - by LED: green = lamp on green blinking = preheating red = lamp fault - by relay (refer to 'Ballast Generals' for more information on lamp status indication via relay)
IP code:	IP20
mounting restrictions:	upright, mains connector at bottom side, see 'Ballast Generals' for details
wire gauge:	0,75...1,5mm ² ; strip length: 10...12mm

Dimensions



Wiring diagram





ZED-EVG - Electronic Ballasts 230V AC for Amalgam Lamps Preheat Start+

Filament preheating is good for lamp electrode life.

innovative: flexible ballast parameters for optimal lamp operation



ballast form I-PH

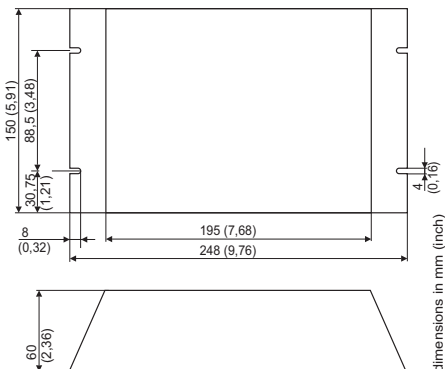
Features

- ↪ electronic ballast for two-lamp operation
 - ballasts are operating even with only one lamp connected
- ↪ to be used with four-wire lamps
- ↪ preheat start+
 - lamp specific parameters can be adapted by customer
- ↪ equipped with active power factor correction
- ↪ microprocessor controlled ballast allows
 - classical stand-alone 'local' operation
 - remote controlled operation via RS485 bus
- ↪ lamp/ballast status indication
 - via RS485 - protocols: ModBus, ZCON, ZEDsimple
 - via green and red LED
 - via potential free relay contacts for lamp on / lamp fault

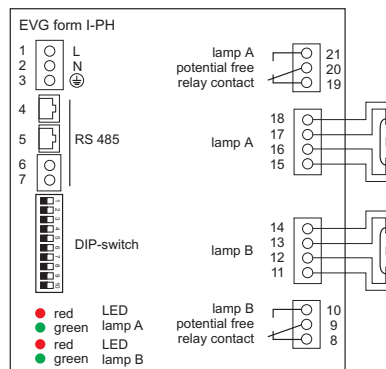
ballast name	input power [W]	input current [A]	power per lamp [W]	lamp current [A]	lamp type
EVG2x[220W]/2A -PH	440 - 480	1,74 - 2,31	200 - 220	1,9 - 2,2	NNI201/107XL
EVG2x[300W]/2,1A -PH	660	2,6 - 3,2	300	2,1	NNI300/147XL

mains voltage:	230V AC ± 10%	mains frequency:	45...65Hz
efficiency:	> 90%	IP code:	IP00
t_c-temperature:	max. 50°C	ambient temperature:	0...40°C
relay contacts:	potential free, load: 50...500mA at 24...120V AC; 50...500mA at 5...60V DC		
ballast control:	- local mode (stand alone operation): set ballast parameters (lamp current, preheat current, preheat time) via DIP switch - remote control: set ballast parameters, start/stop ballast, monitor ballast/lamp state via RS485 bus		
communication protocol:	ZEDsimple, ModBus, ZCON (refer to 'Ballast Generals' for more information on ballast control)		
ballast function set:	current levels / preheat levels: 8 preheat enable/disable preheat time range: - remote control via ZEDsimple: 1...12s, 15s, 18s, 20s - remote control via ModBus & ZCON: up to 255s - local control: 5s, 7s, 12s, 20s		
status indication:	operating status indicated - via RS485 according to the selected communication protocol - by LED: green = lamp on green blinking = preheating red = lamp fault - by relay (refer to 'Ballast Generals' for more information on lamp status indication via relay)		
mounting restrictions:	upright, mains connector at bottom side, see 'Ballast Generals' for details		
wire gauge:	0,75...1,5mm ² ; strip length: 10...12mm		

Dimensions



Wiring diagram

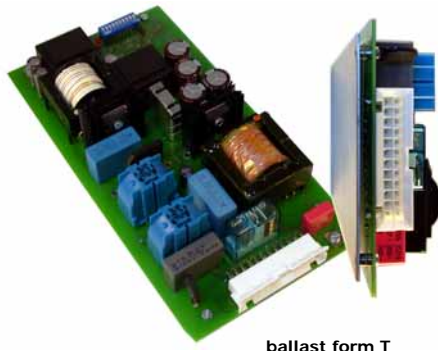




ZED-EVG - Electronic Ballasts 230V AC for Amalgam Lamps Preheat Start+

Filament preheating is good for lamp electrode life.

plug and play: optimal lamp operation
- efficient ballast handling



ballast form T

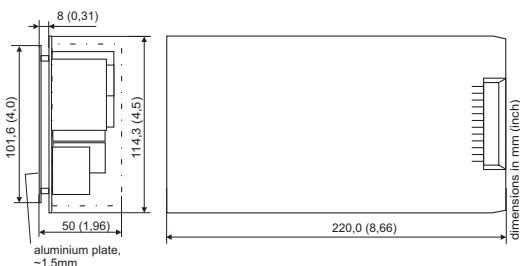
Features

- ⇨ electronic ballast for one-lamp operation
- ⇨ to be used with four-wire lamps
- ⇨ easy mounting in rack units - less space for more ballasts
- ⇨ preheat start+
 - lamp specific parameters can be adapted by customer
- ⇨ equipped with active power factor correction
- ⇨ microprocessor controlled ballast allows
 - classical stand-alone 'local' operation
 - remote controlled operation via RS485 bus
- ⇨ lamp/ballast status indication
 - via RS485 - protocols: ModBus, ZCON, ZEDsimple
 - via green and red LED
 - via potential free relay contacts for lamp on / lamp fault

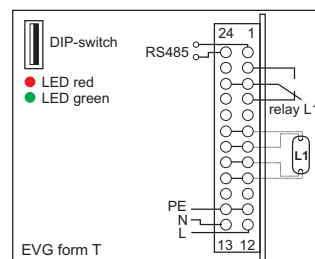
ballast name	input power [W]	input current [A]	power per lamp [W]	lamp current [A]	lamp type
R-EVG220W/2A -PH	230 - 250	0,91 - 1,2	200 - 220	1,9 - 2,2	NNI201/107XL
R-EVG300W/2,1A -PH	330	1,3 - 1,6	300	2,1	NNI300/147XL
R-EVG400W/3,8A -PH	425	1,7 - 2,1	400	3,8	NNI400/147XL
R-EVG330W/4,8A -PH	370	1,46 - 1,79	330	4,8	TUV330XPT

mains voltage:	230V AC ± 10%	mains frequency:	45...65Hz
efficiency:	> 90%	IP code:	IP00
temperature:	see "Ballast Generals" for details		
relay contacts:	potential free, load: 50...500mA at 24...120V AC; 50...500mA at 5...60V DC		
ballast control:	- local mode (stand alone operation): set ballast parameters (lamp current, preheat current, preheat time) via DIP switch	- remote control: set ballast parameters, start/stop ballast, monitor ballast/lamp state via RS485 bus	
communication protocol:	ZEDsimple, ModBus, ZCON (refer to 'Ballast Generals' for more information on ballast control)		
ballast function set:	current levels / preheat levels: 8 preheat enable/disable	preheat time range: - remote control via ZEDsimple: 1...12s, 15s ,18s , 20s - remote control via ModBus & ZCON: up to 255s - local control: 5s, 7s, 12s, 20s	
status indication:	operating status indicated - via RS485 according to the selected communication protocol - by LED: green = lamp on green blinking = preheating red = lamp fault - by relay (refer to 'Ballast Generals' for more information on lamp status indication via relay)		
mounting restrictions:	rack mounting with forced cooling, see "Ballast Generals" for details recommendation for rack: Rack 6slot 220x114,3mm for 6 electronic ballasts, article code: 418-002 (see page 65)		
connections:	use MOLEX JUNIOR FIT connector (ZED 500-008) and 20 MINI FIT crimp contacts (ZED 500-018) (sold separately) recommendation for crimping: Tool Set SC-MK (see page 95)		
wire gauge:	1...1,5mm ² ; strip length: 3...3,5mm		

Dimensions



Wiring diagram



Accessories

ZED 500-008
MOLEX JUNIOR FIT connector



ZED 500-007
1 MINI FIT crimp contact



ZED 500-017
12 MINI FIT crimp contacts
for single lamp ballasts



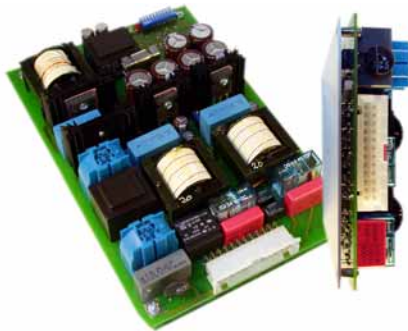
ZED 418-002
Rack6slot
220x114,3mm



ZED-EVG - Electronic Ballasts 230V AC for Amalgam Lamps Preheat Start+

Filament preheating is good for lamp electrode life.

plug and play: optimal lamp operation
- efficient ballast handling



ballast form U

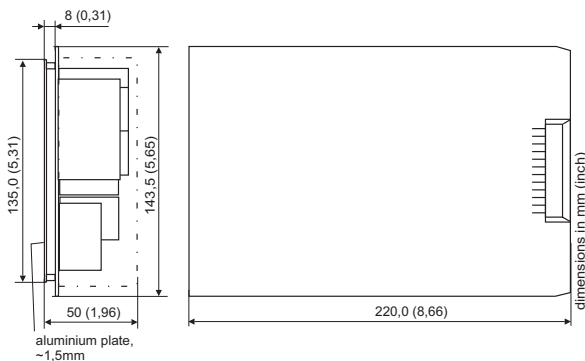
Features

- ↪ electronic ballast for two-lamp operation
 - ballasts are operating even with only one lamp connected
- ↪ to be used with four-wire lamps
- ↪ easy mounting in rack units - less space for more ballasts
- ↪ preheat start+
 - lamp specific parameters can be adapted by customer
- ↪ equipped with active power factor correction
- ↪ microprocessor controlled ballast allows
 - classical stand-alone 'local' operation
 - remote controlled operation via RS485 bus
- ↪ lamp/ballast status indication
 - via RS485 - protocols: ModBus, ZCON, ZEDsimple
 - via green and red LED
 - via potential free relay contacts for lamp on / lamp fault

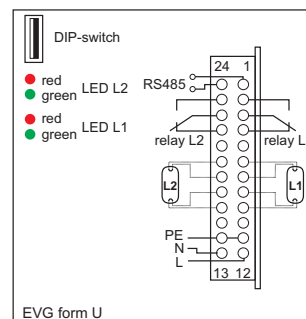
ballast name	input power [W]	input current [A]	power per lamp [W]	lamp current [A]	lamp type
R-EVG2x[220W]/2A -PH	440 - 480	1,74 - 2,31	200 - 220	1,9 - 2,2	NNI201/107XL
R-EVG2x[300W]/2,1A -PH	660	2,6 - 3,2	300	2,1 - 2,4	NNI300/147XL
R-EVG2x[320W]/2,2A -PH	700	2,76 - 3,38	320	2,1 - 2,4	TUV325XPT

mains voltage:	230V AC ± 10%	mains frequency:	45...65Hz
efficiency:	> 90%	IP code:	IP00
temperature:	see "Ballast Generals" for details		
relay contacts:	potential free, load: 50...500mA at 24...120V AC; 50...500mA at 5...60V DC		
ballast control:	- local mode (stand alone operation): set ballast parameters (lamp current, preheat current, preheat time) via DIP switch	- remote control: set ballast parameters, start/stop ballast, monitor ballast/lamp state via RS485 bus	
communication protocol:	ZEDsimple, ModBus, ZCON (refer to 'Ballast Generals' for more information on ballast control)		
ballast function set:	current levels / preheat levels: 8 preheat enable/disable	preheat time range: - remote control via ZEDsimple: 1...12s, 15s, 18s, 20s - remote control via ModBus & ZCON: up to 255s - local control: 5s, 7s, 12s, 20s	
status indication:	operating status indicated - via RS485 according to the selected communication protocol - by LED: green = lamp on green blinking = preheating red = lamp fault - by relay (refer to 'Ballast Generals' for more information on lamp status indication via relay)		
mounting restrictions:	rack mounting with forced cooling, see "Ballast Generals" for details recommendation for rack: Rack 6slot 220x143,5mm for 6 electronic ballasts, article code: 418-003 (see page 65)		
connections:	use MOLEX JUNIOR FIT connector (ZED 500-008) and 20 MINI FIT crimp contacts (ZED 500-018) (sold separately) recommendation for crimping: Tool Set SC-MK (see page 95)		
wire gauge:	1...1,5mm ² ; strip length: 3...3,5mm		

Dimensions



Wiring diagram

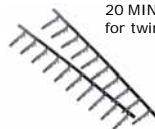


Accessories

ZED 500-008
MOLEX JUNIOR FIT connector



ZED 500-007
1 MINI FIT crimp contact



ZED 500-018
20 MINI FIT crimp contacts
for twin lamp ballasts



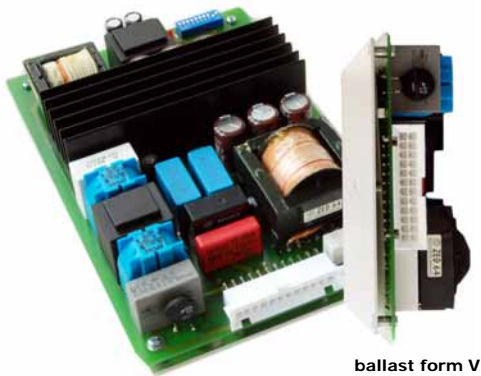
ZED 418-003
Rack6slot
220x143,5mm



ZED-EVG - Electronic Ballasts 230V AC for Amalgam Lamps Preheat Start+

Filament preheating is good for lamp electrode life.

plug and play: optimal lamp operation
- efficient ballast handling



ballast form V

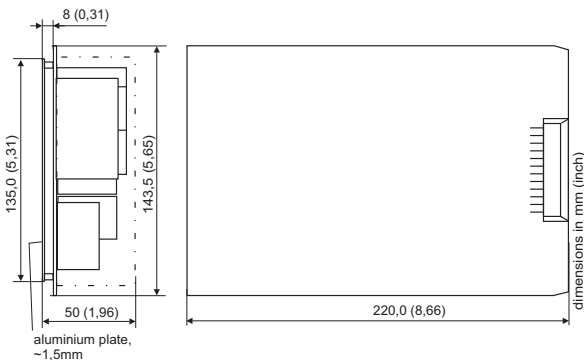
Features

- ⇒ electronic ballast for one-lamp operation
- ⇒ to be used with four-wire lamps
- ⇒ easy mounting in rack units - less space for more ballasts
- ⇒ preheat start+
 - lamp specific parameters can be adapted by customer
- ⇒ equipped with active power factor correction
- ⇒ microprocessor controlled ballast allows
 - classical stand-alone 'local' operation
 - remote controlled operation via RS485 bus
- ⇒ lamp/ballast status indication
 - via RS485 - protocols: ModBus, ZCON, ZEDsimple
 - via green and red LED
 - via potential free relay contacts for lamp on / lamp fault

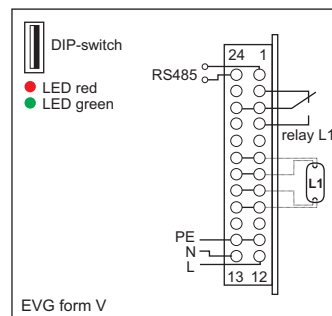
ballast name	input power [W]	input current [A]	power per lamp [W]	lamp current [A]	lamp type
R-EVG600W/5A -PH	660	max. 3,2	600	5	NNI600

mains voltage:	230V AC ± 10%	mains frequency:	45...65Hz
efficiency:	> 90%	IP code:	IPO0
temperature:	see "Ballast Generals" for details		
relay contacts:	potential free, load: 50...500mA at 24...230V AC; 50...500mA at 5...60V DC		
ballast control:	- local mode (stand alone operation): set ballast parameters (lamp current, preheat current, preheat time) via DIP switch	- remote control: set ballast parameters, start/stop ballast, monitor ballast/lamp state via RS485 bus	
communication protocol:	ZEDsimple, ModBus, ZCON (refer to 'Ballast Generals' for more information on ballast control)		
ballast function set:	current levels / preheat levels: 8 preheat enable/disable	preheat time range: - remote control via ZEDsimple: 1...12s, 15s, 18s, 20s - remote control via ModBus & ZCON: up to 255s - local control: 5s, 7s, 12s, 20s	
status indication:	operating status indicated - via RS485 according to the selected communication protocol - by LED: green = lamp on green blinking = preheating red = lamp fault - by relay (refer to 'Ballast Generals' for more information on lamp status indication via relay)		
mounting restrictions:	rack mounting with forced cooling, see "Ballast Generals" for details recommendation for rack: Rack 6slot 220x143,5mm for 6 electronic ballasts, article code: 418-003 (see page 65)		
connections:	use MOLEX JUNIOR FIT connector (ZED 500-008) and 20 MINI FIT crimp contacts (ZED 500-018) (sold separately) recommendation for crimping: Tool Set SC-MK (see page 95)		
wire gauge:	1...1,5mm ² ; strip length: 3...3,5mm		

Dimensions



Wiring diagram



Accessories



ZED 500-008
MOLEX JUNIOR FIT connector



ZED 500-007
1 MINI FIT crimp contact



ZED 500-017
12 MINI FIT crimp contacts
for single lamp ballasts



ZED 418-003
Rack6slot
220x143,5mm



ZED-EVG - Electronic Ballasts 230V AC for Amalgam Lamps Preheat Start+

Filament preheating is good for lamp electrode life

innovative: flexible ballast parameters for optimal lamp operation



ballast form W

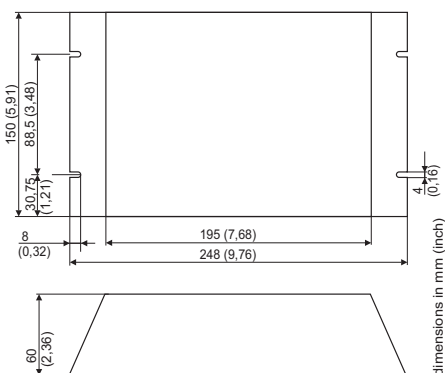
Features

- ⇒ electronic ballast for one-lamp operation
- ⇒ to be used with four-wire lamps
- ⇒ preheat start+
 - lamp specific parameters can be adapted by customer
- ⇒ equipped with active power factor correction
- ⇒ microprocessor controlled ballast allows
 - classical stand-alone 'local' operation
 - remote controlled operation via RS485 bus
- ⇒ lamp/ballast status indication
 - via RS485 - protocols: ModBus, ZCON, ZEDsimple
 - via green and red LED
 - via potential free relay contacts for lamp on / lamp fault

ballast name	input power [W]	input current [A]	power per lamp [W]	lamp current [A]	lamp type
EVG600W/5A -PH	660	max. 3,2	600	5	NNI600

mains voltage:	230V AC ± 10%	mains frequency:	45...65Hz
efficiency:	> 90%	IP code:	IP00
t_c-temperature:	max. 50°C	ambient temperature:	0...40°C
relay contacts:	potential free, load: 50...500mA at 24...120V AC; 50...500mA at 5...60V DC		
ballast control:	- local mode (stand alone operation): set ballast parameters (lamp current, preheat current, preheat time) via DIP switch - remote control: set ballast parameters, start/stop ballast, monitor ballast/lamp state via RS485 bus		
communication protocol:	ZEDsimple, ModBus, ZCON (refer to 'Ballast Generals' for more information on ballast control)		
ballast function set:	current levels / preheat levels: 8 preheat enable/disable preheat time range: - remote control via ZEDsimple: 1...12s, 15s, 18s, 20s - remote control via ModBus & ZCON: up to 255s - local control: 5s, 7s, 12s, 20s		
status indication:	operating status indicated - via RS485 according to the selected communication protocol - by LED: green = lamp on green blinking = preheating red = lamp fault - by relay (refer to 'Ballast Generals' for more information on lamp status indication via relay)		
mounting restrictions:	upright, mains connector at bottom side, see 'Ballast Generals' for details		
wire gauge:	0,75...1,5mm ² ; strip length: 10...12mm		

Dimensions



Wiring diagram

